

**National Assessment and Accreditation Council (NAAC)**

Student Satisfaction Survey (SSS)

Key Indicator - 2.7.1

Under Criterion II of Teaching-learning and Evaluation.

**C.T.E.SOCIETY'S**

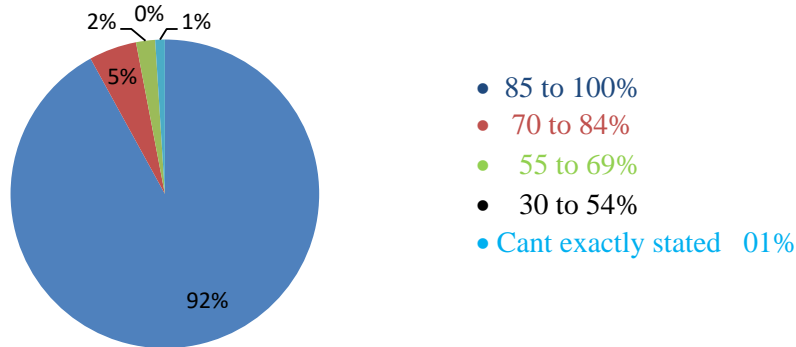
**SMT. A. A. PATIL COLLEGE OF ARTS & COMMERCE FOR WOMEN,  
CHIKODI, DIST: BELAGAVI. (KARNATAKA)**

**Instructions to fill the questionnaire**

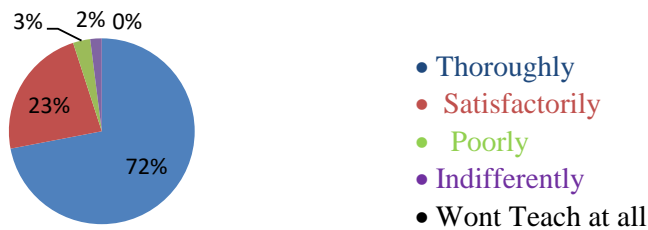
- All questions should be compulsorily attempted.
- Each question has five responses, choose the most appropriate one.

The responses given by the students for the questionnaire provided to the students are given below.

**1. How much of the syllabus was covered in the class?**



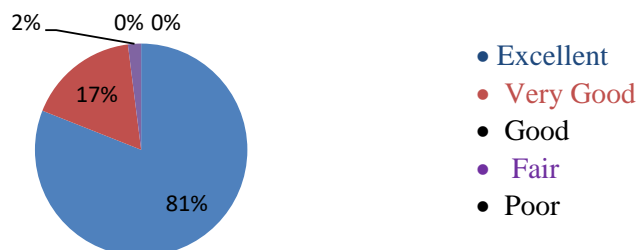
**2. How well did the teachers prepare for the classes?**



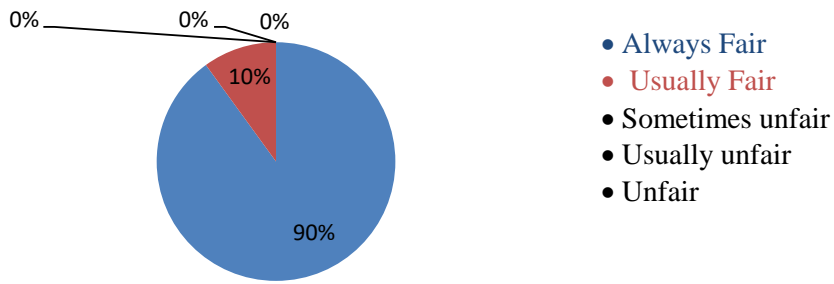
**3. How well were the teachers able to communicate?**



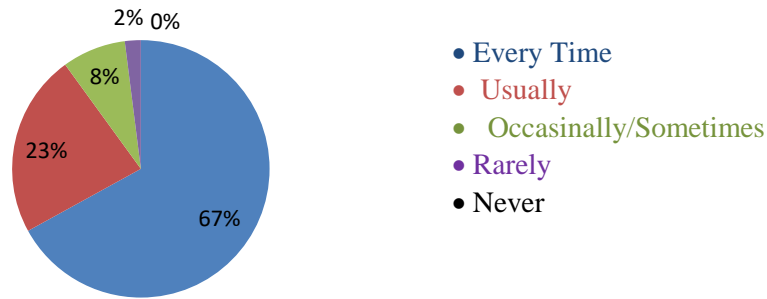
**4. The teacher's approach to teaching can best be described as**



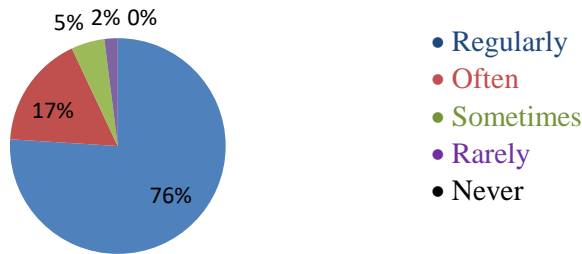
**5. Fairness of the internal evaluation process by the teachers.**



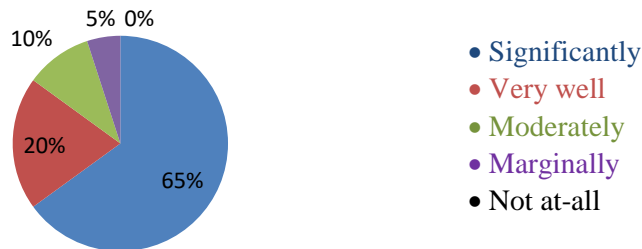
**6. Was your performance in assignments discussed with you?**



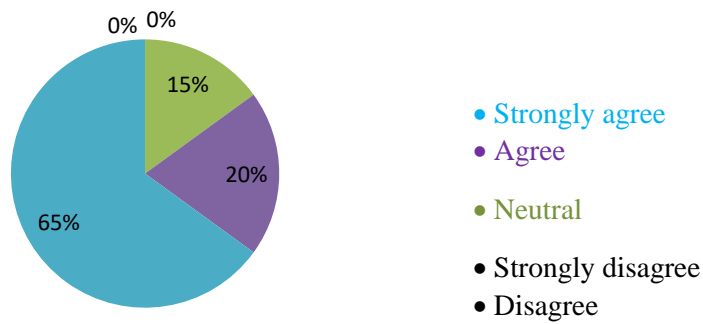
**7. The institute takes active interest in promoting participation, leadership, field visit opportunities for students.**



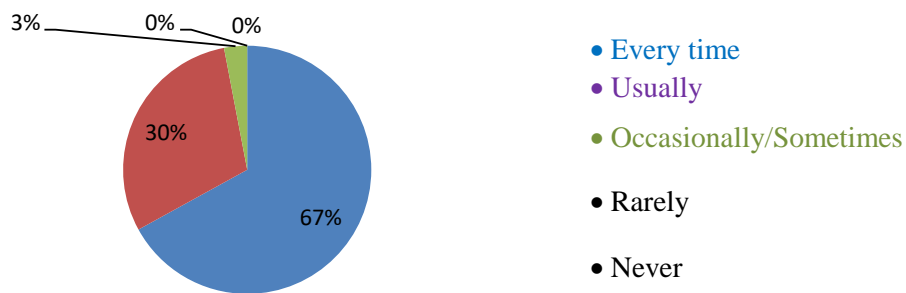
**8. The teaching and mentoring process in your institution facilitates you in cognitive, social and emotional growth.**



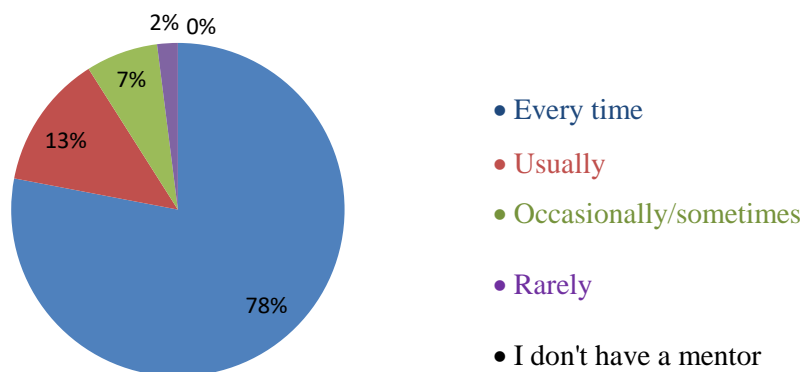
9. The institution provides multiple opportunities to learn and grow.



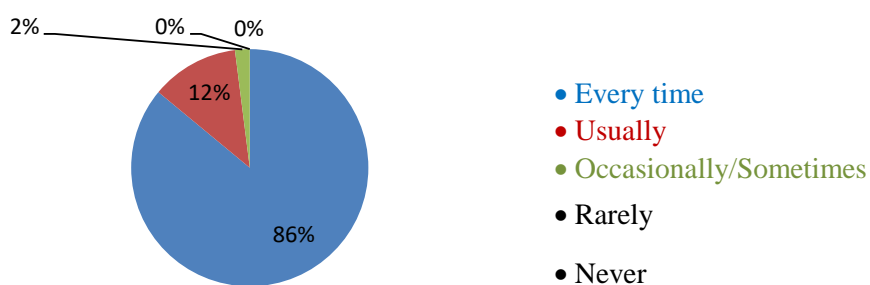
10. Teachers inform you about your expected competencies, course outcomes and programme outcomes.



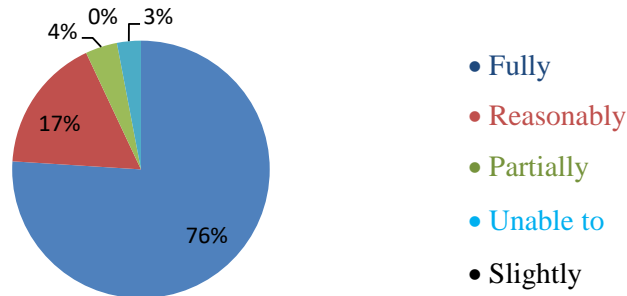
11. Your mentor does a necessary follow-up with an assigned task to you



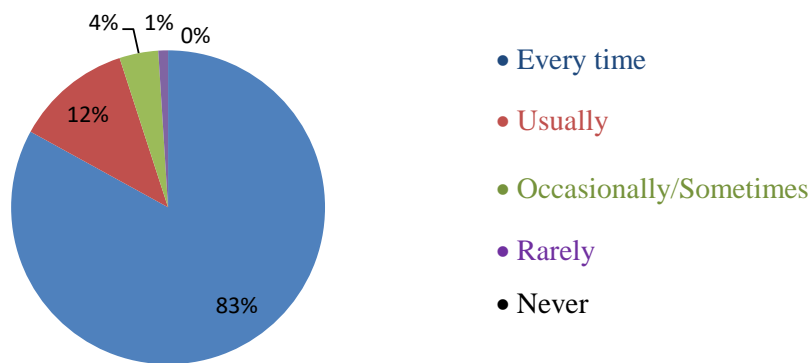
12. The teachers illustrate the concepts through examples and applications.



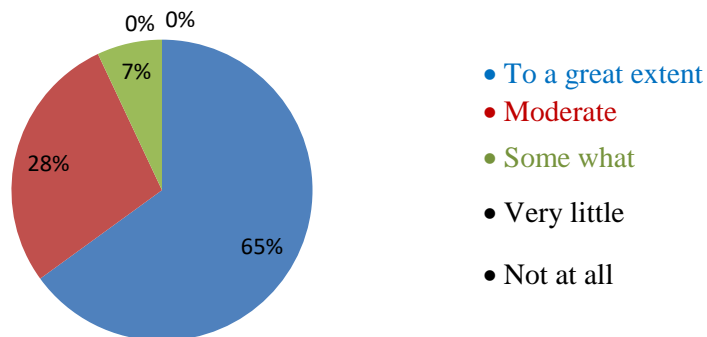
13. The teachers identify your strengths and encourage you with providing right level of challenges.



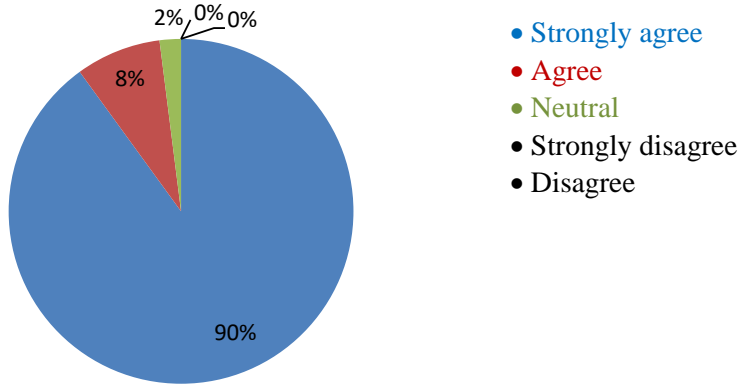
14. Teachers are able to identify your weaknesses and help you to overcome them.



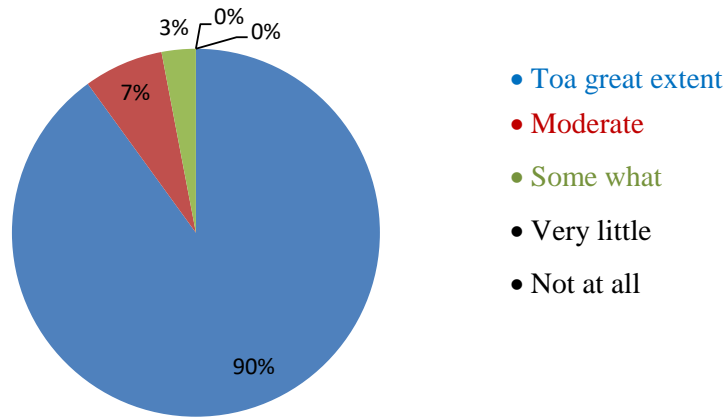
15. The institute/ teachers use student centric methods, such as experiential learning, participative learning and problem solving methodologies for enhancing learning experiences.



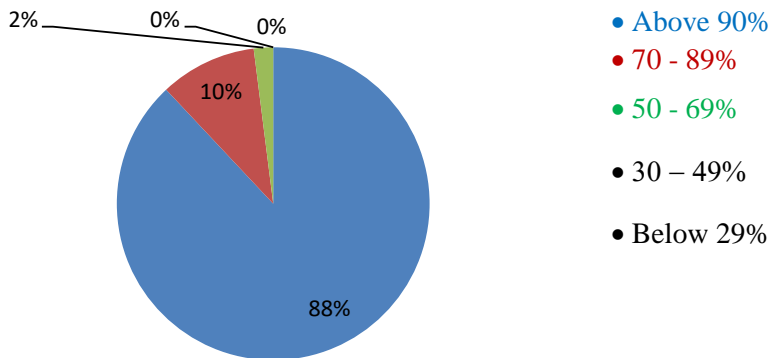
16. Teachers encourage you to participate in extracurricular extensive, cultural, sports social activities.



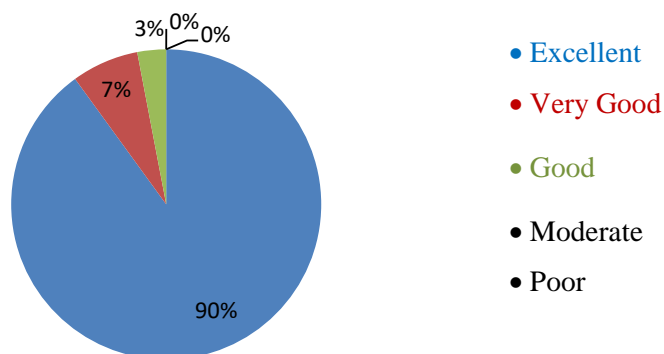
17. Efforts are made by the institute/ teachers to inculcate soft skills, life skills and employability skills to make you ready for the world of work.



18. What percentage of teachers use ICT tools such as LCD projector, Multimedia, Smart Board while teaching.



**19. The overall quality of teaching-learning process in your institute is very good**



**20. Are you satisfied with the infrastructure provided by the college ? ( A- Yes, B- No )**

**Cent-percent students expressed ' Yes ' as their answer.**

To sum-up 92% of the students satisfied about the coverage of syllabus with 85% to 100%, 72% teachers preparation, 86% with teachers communicative ability, excellence of 81% as regards teachers approach to teaching, 90% fairness of the teachers internal evaluation process, 67% with discussion on performance in assignments, 76% regularity in taking active interest in promoting opportunities to the students, 65% significant facilitation for growth, 65% strongly agreeing for multiple opportunities, 67% with teachers information on course & programme outcomes, 78% over follow-up action on assigned task, 86% as regards teachers illustration with examples, 76% over teachers identification of strengths, 83% on teachers ability to identify weaknesses, 65% teachers use of student centric teaching methodologies, 90% teachers encouragement for participation in other than curricular activities, 90% efforts to inculcate essential skills, 88% on teachers using ICT tools between 70 to 89%, 90% over overall quality of teaching learning process & 100% satisfaction on the provision of infrastructure in the college.

Overall 80.35% of the students satisfied with high degree level of satisfaction on overall performance, approach efforts, ability & infrastructure of the college.

**NOTE:**

The student satisfaction survey was undertaken by preparing a questionnaire and the response was obtained manually by distributing the questionnaire to the student asking them to choose the best option and return back the same. The responses were tabulised and analysed. The final results were transformed to percentage and presented the same by pie chart.

From the very next academic year SSS will be obtained by providing weblink.